

**NOTES :**

CONSTRUCTION STANDARDS  
TO BE CONSTRUCTED IN ACCORDANCE WITH MANITOBA HYDRO DISTRIBUTION AND SUBTRANSMISSION STANDARDS, LATEST REVISION.  
NO MAJOR CHANGE SHALL BE MADE WITHOUT APPROVAL OF THE DESIGN ENGINEER OR DELEGATE.

AUTHORITY	NOTIFIED	NOT RECD	OBTAINED
DISTRICT			
C.O.W./MUNICIPAL			
M.T.S.		X	
GAS		X	
SHAW		X	
EASEMENTS		X	
COMMUNICATIONS		X	
S.C.C.		X	
DEPT. OF HIGHWAYS		X	

CONTACT	NAME	PHONE NUMBER	E-MAIL ADDRESS
DESIGN	SLAWA REVZIN	904-761-5611	SLAWA@HYDRO.MB.CA
DESIGN ENGINEER	MONTY PECKOVER	204-761-5611	MONTY@HYDRO.MB.CA
PORTFOLIO PM	DARRIN WACH	451-2617	DWACH@HYDRO.MB.CA
ENERGY SERVICES	DARRYL STOCKI	918-6341	DSTOCKI@HYDRO.MB.CA
UG CONSTRUCTION	BRENT KROEKER	360-4275	BKROEKER@HYDRO.MB.CA
CUSTOMER REP	RYAN AUBREY	204-325-3097	RAUBREY@HYDRO.MB.CA
DISTRICT ENG TECH	PHIL BRUCE	782-2465	PBRUCE@HYDRO.MB.CA

INSTALLED			
Quantity	Fixture Type	Wattage	Pole Type
1	LED	90	EXCLUSIVE
16	LED	150	EXCLUSIVE
	LED	240	SHARED
	LED	90	SHARED

REMOVED			
Quantity	Fixture Type	Wattage	Pole Type
13	LED	209	EXCLUSIVE
	LED	90	SHARED
1	LED	73	EXCLUSIVE
	HPS		EXCLUSIVE
	LED		SHARED

LED CONVERSION CHART		
HPS WATTAGE	EQUIVALENT LED WATTAGE	CATALOG NUMBER
100	73	ERS10C3E1540
150	95	ERS10C3E1740
250	138	ERS120K3E1540
400	200	ERS30K3E1540

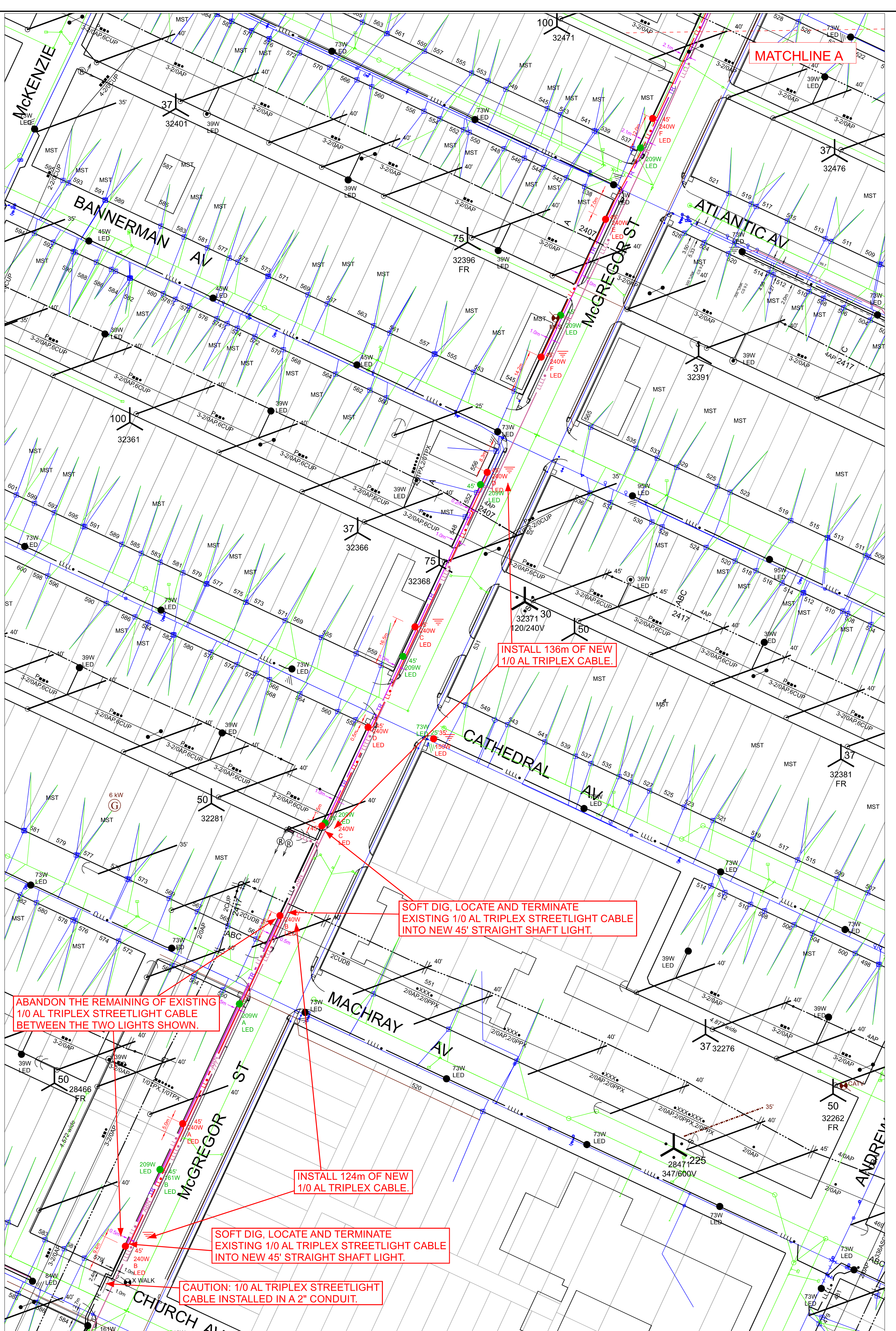
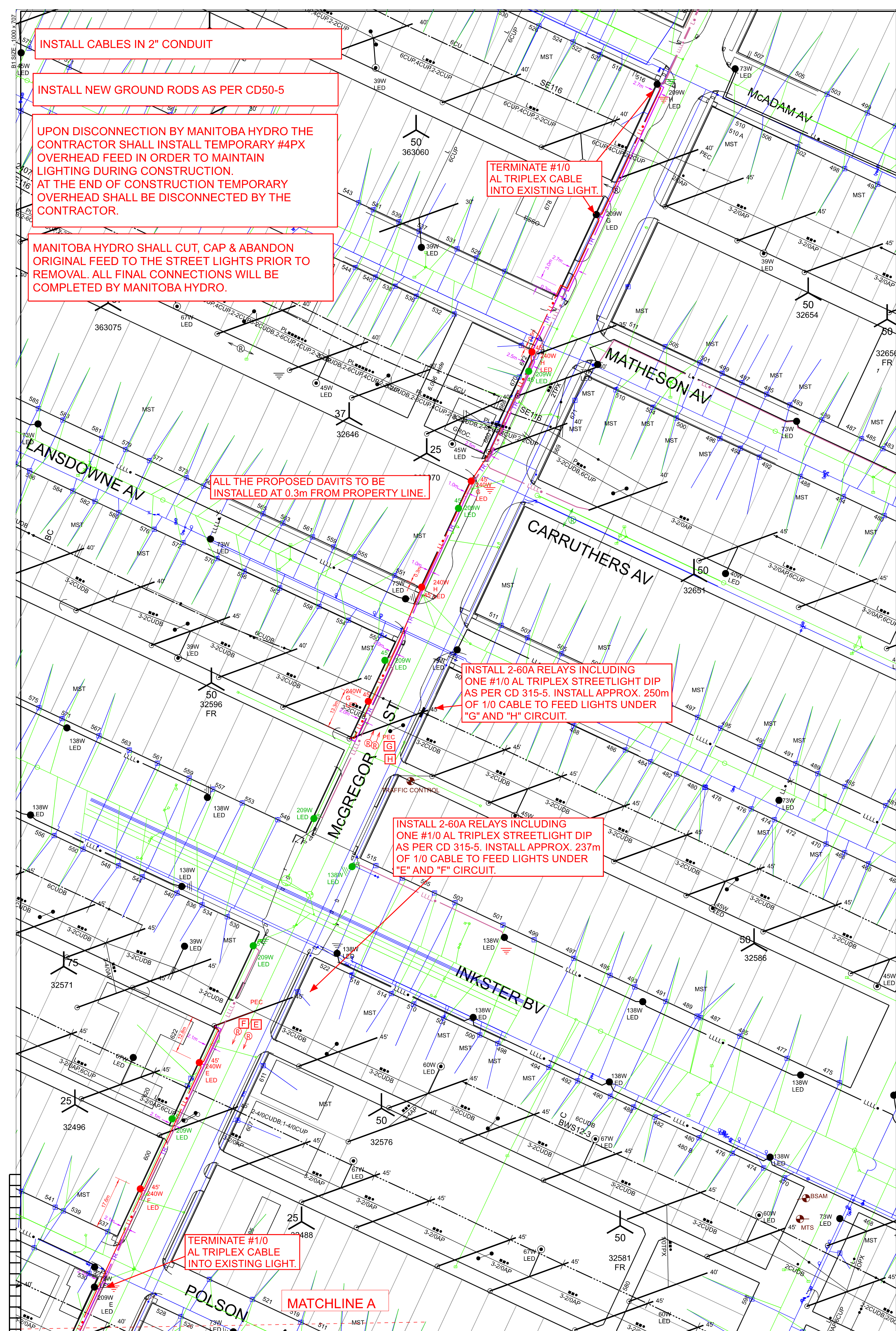
\*STREETLIGHT PLACEMENT FOLLOWS IES STANDARDS AND THEY ARE PLACED ACCORDINGLY USING DRIVEWAY LOCATIONS PROVIDED BY THE DEVELOPER. DRIVEWAY LOCATIONS THAT HAVE BEEN CHANGED AFTER THE DESIGN HAS BEEN SEALED RESULTING IN A CONFLICT BETWEEN STREETLIGHTS AND THE DRIVEWAY ARE THE RESPONSIBILITY OF THE DEVELOPER TO RECOVER THE COSTS ASSOCIATED WITH RELOCATING THE STREETLIGHTS.

BANNERS AND ASSOCIATED HARDWARE TO BE REMOVED AND RETURNED TO THE CITY OF WINNIPEG, 1277 PACIFIC AVENUE WITH AN ITEMIZED LIST AND QUANTITIES.



THIS IS A PRINT OF A DOCUMENT THAT HAS BEEN ELECTRONICALLY AUTHENTICATED WITH TECHNOLOGY AUTHORIZED BY THE EGM. THE ORIGINAL IS IN ELECTRONIC FORM.

INFORMATION PERTAINING TO THE SIZE, TYPE AND LOCATION OF MANITOBA HYDRO FACILITIES AND INSTALLATIONS IS ILLUSTRATED AND NOT BE RELIED ON FOR THE PURPOSES OF ANY ACTIVITY BEING CONDUCTED AT OR NEAR THE IDENTIFIED HYDRO INSTALLATIONS. ALL LOCATIONS AND EQUIPMENT MUST BE VERIFIED BY APPROPRIATE HYDRO DISTRICT OFFICES PRIOR TO ANY PHYSICAL ACTIVITY BEING UNDERTAKEN AT OR NEAR HYDRO INSTALLATIONS.



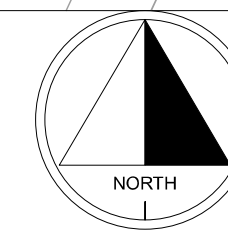
**PROPOSED SEQUENCE OF CONSTRUCTION:**

- MH STAFF SHALL DISCONNECT AND ISOLATE THE EXISTING STREET LIGHT POLES TO BE REPLACED.
- CONTRACTOR TO INSTALL TEMPORARY OH FEEDS BETWEEN EXISTING POLES.
- MH STAFF TO INSTALL FINAL DROP FROM EXISTING POLE TO SOURCE AND ENERGIZE.
- CONTRACTOR TO INSTALL NEW POLES, UNDERGROUND STREET LIGHT CABLE BETWEEN POLES, GROUND RODS, RELAYS, AND BOTTOM SECTION OF CABLE GUARD AT DIP (IF APPLICABLE) AND TERMINATE IN HAND HOLE.
- MH STAFF TO DISCONNECT AND ISOLATE TEMPORARY OH FEED TO EXISTING POLES, AS WELL AS COMMISSION AND ENERGIZE NEW POLES FROM NEW UNDERGROUND SOURCE.
- CONTRACTOR TO REMOVE OH FEEDS AND REMOVE EXISTING POLES.

**COW TENDER #: 547-2023**

REEL NUMBER	MANUFACTURER	MANUFACTURE DATE

CONTACT "CLICK BEFORE YOU DIG MANITOBA" AT  
[ClickBeforeYouDigMB.com](http://ClickBeforeYouDigMB.com)  
**THREE FULL WORKING DAYS**  
PRIOR TO CONSTRUCTION FOR LOCATION OF EXISTING WATER, WASTEWATER, LAND DRAINAGE UTILITIES AND MANITOBA HYDRO UTILITIES



NO.	DATE	REVISIONS	BY	CHKD	APP

DRAWING NUMBER	REFERENCE DRAWINGS	DRAWN	SR
	WINNIPEG UGS APPROVAL	CHECK	
		SCALE	1:750
		DATE	2025 01 06

AREA	5201, 5101, 5203	MANITOBA HYDRO DISTRIBUTION ENGINEERING
STATION NUMBER	N/A	WO# P-40859 NETWORK # 4308758
FEEDER NUMBER	N/A	CSC: CITY CENTRE
SYSTEM VOLTAGE	120/240V	CUSTOMER SERVICE PROJECT
		MCGREGOR RECONSTRUCTION
		INSTALL LIGHTS ON MCGREGOR REDWOOD BETWEEN CHURCH AND MCADAM
		1-04707-DE-50000-0662